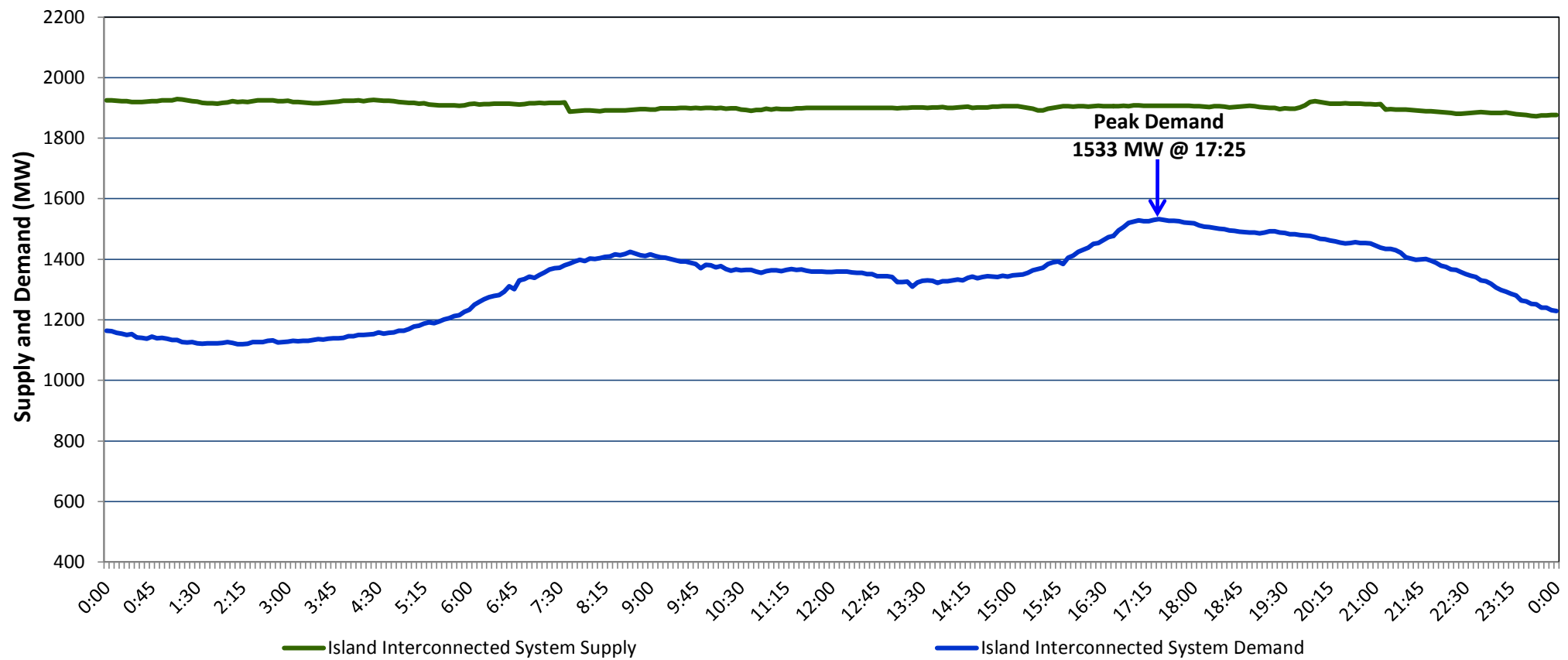


**Newfoundland Labrador Hydro (NLH)
Supply and Demand Status Report Filed Thursday, January 04, 2018**

**Section 1
Island Interconnected System Supply and Demand
Actual 24 Hour System Performance For Wednesday, January 03, 2018**



Supply Notes For January 03, 2018

- 1,2
- A As of 1052 hours, December 28, 2017, Stephenville Gas Turbine available at 25 MW (50 MW).
 - B As of 1652 hours, December 29, 2017, Hardwoods Gas Turbine available at 25 MW (50 MW).
 - C As of 1609 hours, December 31, 2017, Holyrood Unit 3 available at 130 MW (150 MW).
 - D At 0739 hours, January 03, 2018, Holyrood Unit 1 available at 130 MW (170 MW).
 - E At 0739 hours, January 03, 2018, Holyrood Unit 2 available at 154 MW (170 MW).

**Section 2
Island Interconnected Supply and Demand**

Thu, Jan 04, 2018	Island System Outlook ³	Seven-Day Forecast	Temperature (°C)		Island System Daily Peak Demand (MW)	
			Morning	Evening	Forecast	Adjusted ⁷
Available Island System Supply: ⁵	1,850 MW	Thursday, January 04, 2018	-8	-2	1,515	1,406
NLH Generation: ⁴	1,570 MW	Friday, January 05, 2018	7	3	1,355	1,248
NLH Power Purchases: ⁶	90 MW	Saturday, January 06, 2018	0	-3	1,535	1,426
Other Island Generation:	190 MW	Sunday, January 07, 2018	-6	-7	1,585	1,475
Current St. John's Temperature:	-10 °C	Monday, January 08, 2018	-9	-6	1,625	1,515
Current St. John's Windchill:	-15 °C	Tuesday, January 09, 2018	-6	0	1,550	1,441
7-Day Island Peak Demand Forecast:	1,625 MW	Wednesday, January 10, 2018	3	-6	1,550	1,441

Supply Notes For January 04, 2018

- 3
- Notes:
1. Generation outages for running and corrective maintenance are included. These are not unusual for power system operations. They generally do not impact customer supply. The power system operators schedule outages to system equipment whenever possible to coincide with periods when customer demands are low and sufficient supply reserves are available. However, from time to time equipment outages are necessary and reserves may be impacted.
 2. Due to the Island Interconnected System being isolated from the larger North American grid, when there is a sudden loss of large generating units some customer's load must be interrupted for short periods to bring generation output equal to customer demand. This automatic action of power system protection, referred to as under frequency load shedding, is necessary to ensure the integrity and reliability of system equipment. Under frequency events typically occur 5 to 8 times per year on the Island Interconnected System and the resultant customer load interruptions are generally less than 30 minutes.
 3. As of 0800 Hours.
 4. Gross output including station service at Holyrood (24.5 MW) and improved NLH hydraulic output due to water levels (35 MW).
 5. Gross output from all Island sources (including Note 4).
 6. NLH Power Purchases include: CBPP Co-Gen, Nalcor Exploits, Rattle Brook, Star Lake, Wind Generation, Vale capacity assistance and Maritime Link Import (when applicable).
 7. Adjusted for CBP&P and Vale and Praxair interruptible load, the impact of voltage reduction and Maritime Link Exports (when applicable).

**Section 3
Island Peak Demand Information
Previous Day Actual Peak and Current Day Forecast Peak**

Wed, Jan 03, 2018	Actual Island Peak Demand ⁸	17:25	1,533 MW
Thu, Jan 04, 2018	Forecast Island Peak Demand		1,515 MW

- Notes: 8. Island Demand is supplied by NLH generation and purchases, plus generation owned and operated by Newfoundland Power and Corner Brook Pulp & Paper (Deer Lake Power, DLP).